



Castillo de Maceda / Castillo de Herrera

16,000 m³ Chemical IMO II / Oil Tanker

OWNER: Empresa de Navegação Elcano, S.A.

	MACEDA	HERRERA
BUILT IN	2008 – TVK Shipyard (Turkey)	2008 – TVK Shipyard (Turkey)
FLAG	Brazilian	Brazilian
IMO NUMBER	9403968	9424039
CALL SIGN	PPUZ	PPVN
FLEET	471000283	471000281
CLASSIFICATION	BUREAU VERITAS CLASS 1 + OIL TANKER/CHEMICAL TANKER IMO II, Unrestricted Navigation ; + BV + AUT-UMS + MACH + HULL + AUT-PORT ESP, SYS-NEQ-1 , IG, AVM-APS, MANOVR. VCS, CARGO CONTROL, CLEAN SHIP, MON-SHAFT INWATERSURVEY	

MAIN PARTICULARS

Length overall:	139,95 m
Breadth:	21.00 m
Depth:	10.60 m
Deadweight / Draft:	15,123 t / 8.10 m
Light ship:	
Cargo pumps:	12 x 335 m ³ /h at 120 mlc 1 x 80 m ³ /h at 120 mlc for Slop Tanks FRAMO -SD 150
IGS:	IG 2500 m ³ /h SMITGAS & N2 Generator 825 m ³ /h Generon
Coating:	Ballast Tanks Epoxy Cargo Tanks Marinelime 784
Venting system:	High velocity
Nº of segregations:	6
Cranes:	1 X 10 Tn
Type of Main Engine:	Four Strokes 6M43C MAK - 5.400 Kw / 500 r.p.m.
Power at M.C.R.:	176 gr/kWh at 100 % MCR 175 gr/kWh at 85 % MCR
Bow Thruster:	Jastram 750 Kw

TONNAGE

	Gross	Net
International:	8,698 Tons About	4,670 Tons About
Suez Canal:	8,757	-
Panama Canal:	7,515	-

CAPACITIES (100%)

Cargotanks 100 %	16,000 m ³
Slop tank	380 m ³
Washwater / ballast tank	247 m ³
Ballast tanks	6,014 m ³
F.O.	725 m ³
D.O.	114 m ³
Freshwater	99 m ³



EMPRESA NAVIERA ELCANO, S.A.

CARGO TKS CAPACITIES

Tanks Identity	Capacity m3 (100%)	(98%)
1P	1,175	1,151.5
1S	1,175	1,151.5
2P	1,100	1,078
2P	1,100	1,078
3P	1,000	980
3S	1,000	980
4P	1,600	1,568
4S	1,600	1,568
5P	1,725	1,690.5
5S	1,725	1,690.5
6P	1,400	1,372
6S	1,400	1,372
Slop Tank C	380	372.4
Total (100%)	16,380	16,052.4

OTHER DIMENSIONS

Distance from bow to center of manifold:	66,51 m
Distance from stern to center of manifold:	73.44 m
Distance from manifold to ship rail:	5.15 m
Height of manifolds above deck:	2,16 m
Distance between manifold (Liq-Vap):	780 mm
Distance from manifold to waterline:	8.62 m

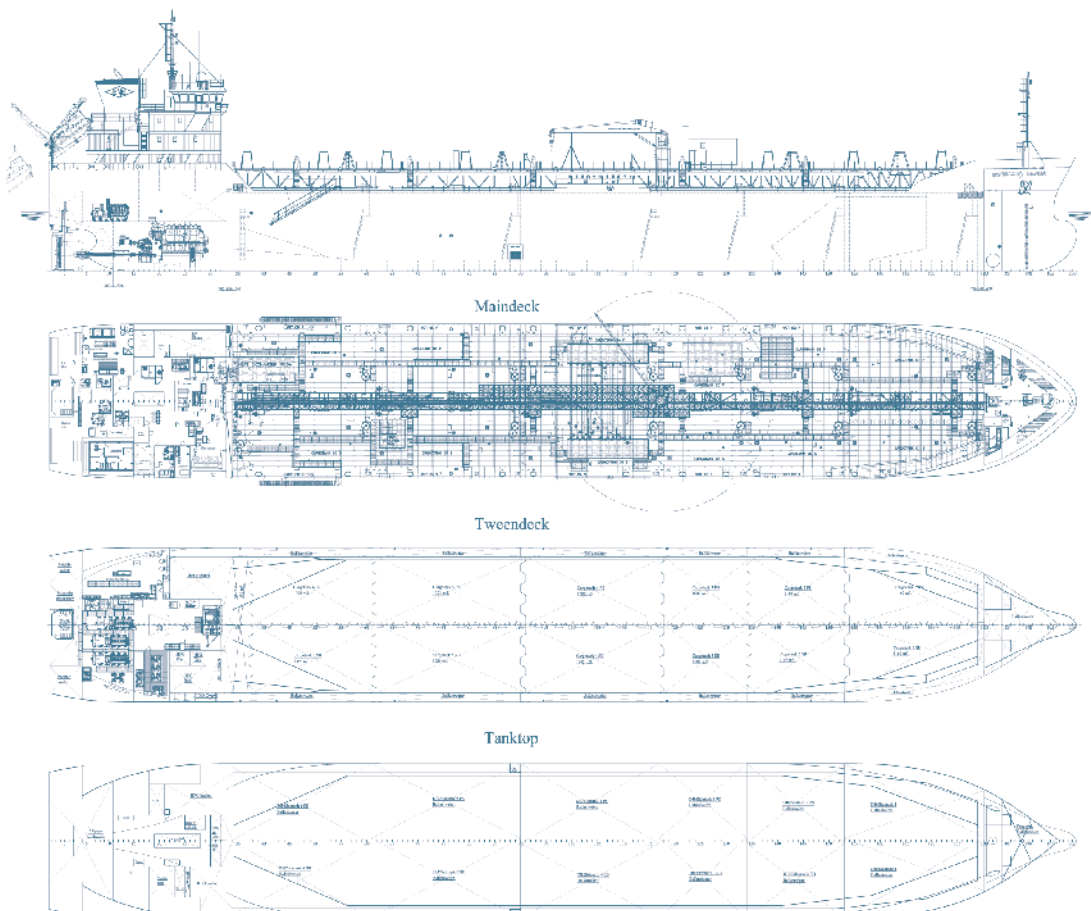
SPEED / CONSUMPTION

	Speed (kn)	Consumion (mt/d)	
		DO	FO
BALLAST	14.00	-	16.00
LADEN	14.70	-	18,00
PORT (Idle)	-	-	1,50
PORT (discharge)	-	2.00	3,60

LOADING SCALE

METERS	FEET	DWT (mt)	TPC (mt)
-	-	-	27

Notice: Particulars are believed to be correct but not guaranteed and should not be considered as charter-party description.



EMPRESA NAVIERA ELCANO, S.A.